



Let **UK** Home

1 Bedrooms

Flat

Located in London

£3,402 Per Month



info@letukhome.co.uk

<https://www.letukhome.co.uk/>

01795 358 886



86-92 Kensington Gardens Square London

W2 4BB



Let UK Home are excited to offer this stunning one-bedroom apartment in Garden House.

This charming ground-floor apartment is located in a private, well-maintained block and offers a perfect blend of comfort and character. It features a spacious reception room with high ceilings and a large sash window that floods the space with natural light, offering picturesque views of the tranquil Kensington Garden Square. Residents can enjoy access to the beautifully landscaped communal garden, ideal for outdoor relaxation.

Inside, this elegant apartment features a spacious double bedroom with generous storage space, a sophisticated reception area adorned with bespoke furnishings, and a stunning polished marble bathroom, in addition to an en-suite. The fully integrated, custom Miele kitchen is perfect for those who enjoy cooking, while smart home technology—including Smart TVs in both the bedroom and the reception room—adds a modern touch to the living experience.

The building offers an array of top-tier amenities, including 24-hour security, lift access to all floors, and exclusive private entry to the serene Kensington Garden Square gardens. Residents also benefit from an emergency out-of-hours maintenance service.

Garden House is located in a quiet residential part of W2 and close to the amenities of Westbourne Grove, Notting Hill and the beautiful Hyde Park. It is also perfectly located for easy access to transport links with Bayswater and Queensway tube station just minutes walk away.

86-92 Kensington Gardens Square London

£3,402 Per Month

- Ground Floor
- Access To Communal Garden
- Lift service
- Available furnished or unfurnished
- Porter & CCTV
- Broadband
- Security Cameras & Door Entry System
- 24 Hour Emergency Helpline & Service
- Laundry Service
- EPC Rating: C



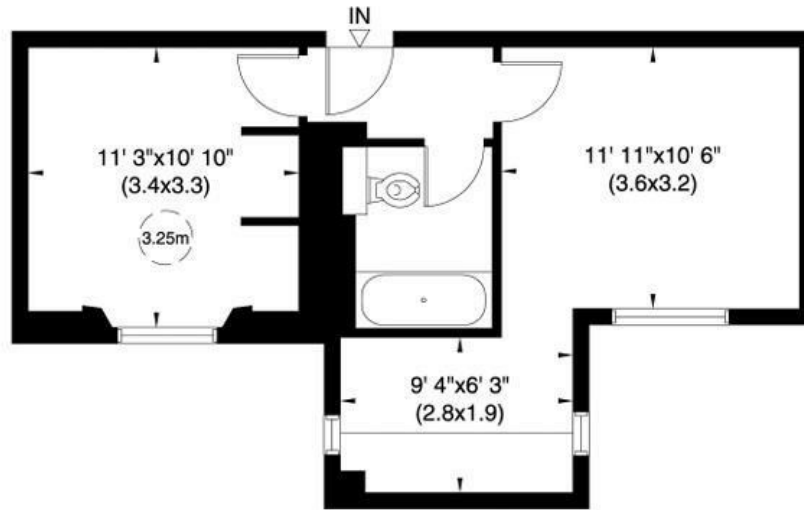


Let **UK** Home

3F 2 Eastbourne Terrace
Paddington
London
W2 6LG

01795 358 886

info@letukhome.co.uk



Upper Ground Floor

Council Tax Band: D

Local Authority:

Agents Note: Whilst every care has been taken to prepare these particulars, they are for guidance purposes only. All measurements are approximate and are for general guidance purposes only and whilst every care has been taken to ensure their accuracy, they should not be relied upon and potential buyers/tenants are advised to recheck the measurements.

Energy Efficiency Rating		Current	Potential
Very energy efficient - lower running costs			
(92 plus) A			
(81-91) B			
(69-80) C		77	80
(55-68) D			
(39-54) E			
(21-38) F			
(1-20) G			
Not energy efficient - higher running costs			
England & Wales	EU Directive 2002/91/EC		

<https://www.letukhome.co.uk/>